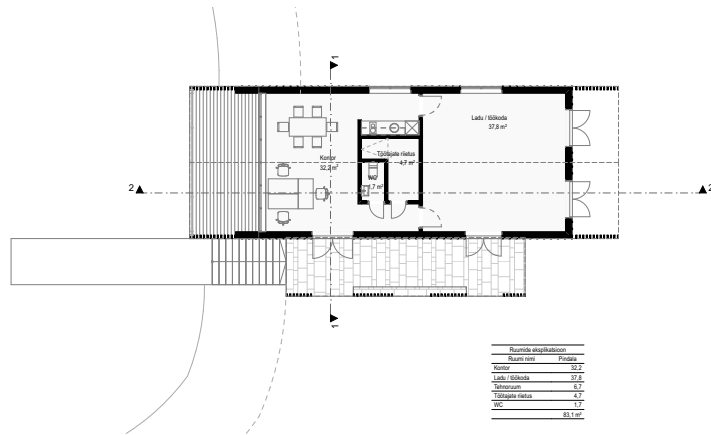




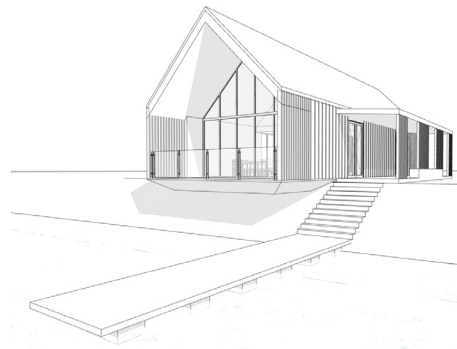
REAL SITE / COASTAL EDGE OF SAAREMAA



ATMOSPHERE VISUAL / CGI STUDY



PLAN BASED ON INITIAL SKETCH BY STUUDIO PUNKTIIR (2021)



DEVELOPMENT SKETCH

House concept / Saaremaa coastal site

This design reinterprets the traditional gable-roofed dwelling for the coastal landscape of Saaremaa. The house forms a quiet threshold between land and water, using strong geometry, natural materials, and open visual connections.

The CGI (top-right) conveys spatial atmosphere. The aerial photo (top-left) shows the real landscape geometry behind the concept.

The plan (bottom-left), based on an initial sketch by Stuuudio Punktiir (2021), was part of early site analysis. This version explores alternative spatial and aesthetic strategies for the lagoon.

Part of Project "O" – exploring place-based minimalism and low-impact design.